

# ANNUAL REPORT **2019**

Rodriguez Family,  
18 nights



**Ronald McDonald  
House Charities®**  
of the Red River Valley

# TABLE OF **CONTENTS**

---

## TABLE OF **CONTENTS**

Page 2

## OUR **MISSION**

Page 3

## RMHC **STAFF**

Page 4

## RMHC **BOARD OF DIRECTORS**

Page 5

## A MESSAGE FROM THE **EXECUTIVE DIRECTOR**

Page 6

## 2019 **YEAR IN REVIEW**

Page 7

## **FINANCIAL SUMMARY**

Page 8

## 2019 **IN MEMORIAL & TRIBUTE DONATIONS**

Page 9



Davidson Family,  
17 nights



## OUR MISSION

Keeping families  
together and  
providing the  
comforts of home  
while their kids  
receive medical  
care.





## RONALD MCDONALD HOUSE CHARITIES OF THE RED RIVER VALLEY 2019 STAFF

### **Executive Director**

Jill Christopher

### **Development Director**

Erica Johnsrud

### **Development Coordinator**

Alex Kizima

Alexis Swenson

### **Director of Family Services Associates**

Lane Pereboom

Caitlin Rakow

### **Director of Operations**

Ashley Petersen

### **Operations Assistant**

Kelly Binfet

### **Family Associates**

Kassie Berg

Anne Butkowski

LeAnne Ebersville

Ali Engraf

Sandy Heffernan

Kaitlyn Marschel

Maurine McGill

Megan Nielsen

Emily Pekas

Leah Rempfert

Lisa Rudnick

Becca Schermer



A special thanks to our interns and security team who committed their time and talents to RMHC in 2019.

# 2019 **BOARD OF DIRECTORES**

## Officers

**President** – Brad Kraft, Ascensus Trust Company

**Vice President** – Shauna Wimer, Midco

**Past President** – Tiffany Lawrence, Sanford Health

**Treasurer** – Kelly Messerschmidt, Bell Bank

**Secretary** – Emily Cook, KPEK Burger Group/McDonald's

## Members

LuAnne Brosz, Network Center

Nicole Christensen, Essentia Health

Kirsten Jensen, MSUM

Monica McConkey, Prairie St. John's

Sharon Miller, retired

Alexis Odden, Eide Bailly

Jeremy Ostrowski, Aldevron

Katie Rizzo, Sanford Health

Jean Zimmerman, Offutt Family Foundation



**RMHC**  
of the Red River Valley

# A MESSAGE FROM THE EXECUTIVE DIRECTOR



We leave 2019 behind with full hearts, immense gratitude and great anticipation for another wonderful year of service in 2020. This past year was highlighted by a large increase in the number of families we served. This increase was twofold. First, it was our first full calendar year in our new Ronald McDonald House and we exceeded our plan for the number of families served which emphasized the need for our larger space. Second, the opening of our new Ronald McDonald Family Room in partnership with Essentia Health. This new space allows us to serve even more families each by helping families with children in the NICU to find respite just steps from their child's bedside.

The increasing need we are seeing could only be met with the wonderful support we have from you - our donors, volunteers and advocates. Your generosity allows us to help more and more families each day. It allows us to make sure that families not only have a place to rest, but all the extra things that make our programs feel like home – meals, toys, fun, connection. Thank you for your continued support of our mission. We truly could not do what we do without each and every one of you!

Sincerely,

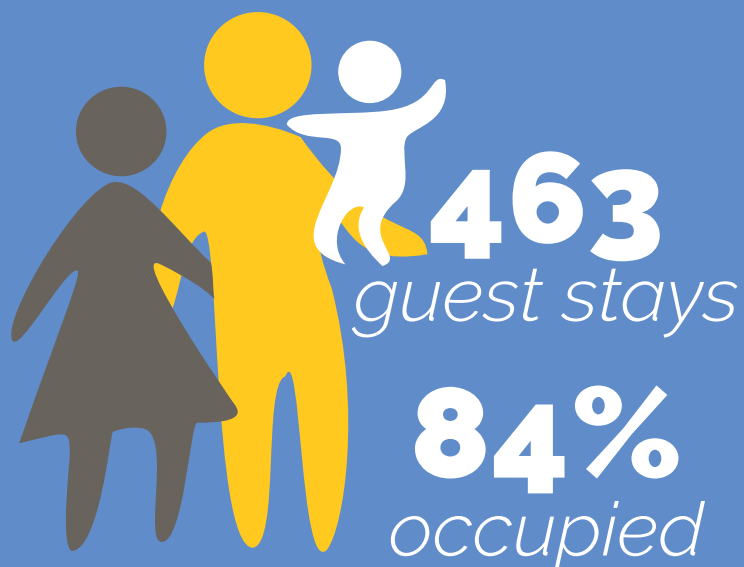
**Jill R. Christopher**

Executive Director

## Executive Director's Note:

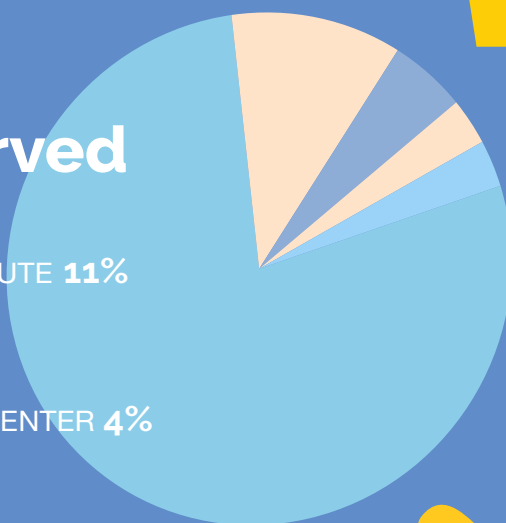
Since the end of 2019, our world has changed quite drastically as we navigate the new era of COVID-19. Rest assured that despite the challenges we have faced since March, one thing remains the same for us here at RMHC of the Red River Valley - our commitment to ensure our families have everything they need so they can focus on their sick child. We know it's tough times for everyone and we are so grateful for your continued support and friendship. The well-being of our families is at the heart of everything we do and we are following the advice of health officials to keep everyone safe as we continue to care for them during this trying time.

# YEAR IN REVIEW 2019



## Facilities Served

SANFORD HEALTH **76%**  
 EATING DISORDER INSTITUTE **11%**  
 PRAIRIE ST JOHN'S **4%**  
 ESSENTIA HEALTH **4%**  
 ROGER MARIS CANCER CENTER **4%**  
 OTHER: **1%**



**1,053**  
*visits to the Ronald  
McDonald Family Room*

From Oct-Dec, 69 families were  
able to use the RMFR

**1,160**  
*volunteers*

**4,602**  
*hours volunteered*



**76%**

OF FAMILIES HAVE NOT BEEN ABLE TO  
CONTRIBUTE TOWARD THEIR STAY

WE ASK FAMILIES TO DONATE \$20 TOWARD THEIR STAY IF THEY ARE  
ABLE. BUT NO ONE IS TURNED AWAY FOR INABILITY TO PAY.

# FINANCIAL SUMMARY

AS OF DECEMBER 31<sup>ST</sup> 2019

## Assets:

Cash, cash equivalents and short-term investments	\$773,164
Property, equipment, less accumulated depreciation	\$4,402,235
Long-term investments/Other Assets	<u>\$2,200,398</u>
<b>Total Assets</b>	<b><u>\$7,375,797</u></b>

## Liabilities & Net Assets:

Accounts payable & accrued expenses	\$48,366
Long-Term Debt	\$641,263
<b>Total Liabilities</b>	<b><u>\$689,629</u></b>

## Net Assets:

Without donor restrictions	\$4,790,465
With donor restrictions	\$1,895,703
<b>Total net assets</b>	<b><u>\$6,686,168</u></b>

<b>Total liabilities &amp; net assets</b>	<b><u>\$7,375,797</u></b>
---	---------------------------

## Income:

Contributions	\$451,842
Fundraising Events (net of expenses)	\$131,485
Grants	\$94,772
Non-Cash Contributions, net	\$24,194
Program Service Revenue	\$58,363
Investment Income	\$187,971
Gain on Disposal of Assets	\$81,395
Net Assets released from restriction	\$152,131
<b>Total Income</b>	<b><u>\$1,182,153</u></b>

## Functional Expenses:

Program services (House operations & outreach)	\$649,904
Fundraising	\$126,054
Management & General	\$127,965
<b>Total Expenses</b>	<b><u>\$903,923</u></b>



*Gifts were made in memory & honor of the following people in 2019. If you made a memorial or honorarium gift in 2019 and it was omitted, misspelled, or listed incorrectly, please accept our sincere apology and notify our Development Director, Erica, at 701-232-3980 or [erica@rmhcfargo.org](mailto:erica@rmhcfargo.org).*

## 2019 MEMORIAL DONATIONS

DONATIONS WERE MADE IN MEMORY OF:

Agnes Schmidt  
Alayne Milner  
Alexa Young  
Alvin Barehsen  
Amanda Perkins  
Benton C. Degerstrom  
Betty Nordling  
Betty Stadum  
Beverly Hall  
Bill Grode  
Bob Scott  
Brian Eraker  
Brinley  
Brooklyn Roehrich  
Bruce Durheim  
Bruce Olson  
Calen Schmidt  
Chris Decker  
Christopher Lubbers  
Clara Wilde  
Connie Ihry  
Culley Oothoudt  
Dale Ihry  
Dan Johnson  
Dan Kenna  
David Dinkel  
Delanne Flynn

Denny Clubb  
Donald Bauman  
Donna Sheldon  
Dorothea Grow  
Eden Rose Quast  
Ethelyn Johnsrud  
Eugene McNulty  
Faith Westby  
Gladys Mae Smith  
Gretchen Rivers  
Helen Severson  
Hudson Seykora  
Jalanta Czernek  
Jeanne Bentz  
Jerry Stewart  
Jessy McKinnon Haberman  
Joan Penning  
Joan Pope  
John Evenson  
John Freer  
Joshua Jacob Hoffman  
Julie Jorgensen  
Julius Brown  
Kathy Stolt  
Kevin Anderson  
Lavaugh Moreland  
Lavern Frank

LaVonne Brass  
Leon Carroll Sr  
LeRoy Samuelson  
Lowell Barden  
Lyla Rath  
Mark Prestegaard  
Marty Hettervig  
Mike Lyman  
Mike Lyman  
Norma Rittal  
Pam Elton Rytter  
Paul Suomala  
Peter Richman  
Phyllis Kusnierak  
Rev. Gordon Berntson and Julius Brown  
Rhett Jacob Pavak  
Rudolph Fronk  
Rudy Schmidt  
Sandi Freisen  
Sara McAllister  
Sophia Brademeyer  
Thomas Falls  
Thomas Lehrer  
Vayda Bryelle Salo  
Vernon Hammer  
Wayne Monge

## 2019 TRIBUTE DONATIONS

DONATIONS WERE MADE IN HONOR OF:

37 People  
Alexis Swenson  
Alyssa Little  
Amy Bryant  
Bethany Bakke  
Betty Kelner  
Brock Heiser  
Cayson Rusch  
Charlie Wimer  
Cyle Warcken  
Declan Spessard  
Eli Dorrheim  
Erica Johnsrud  
Graham & Logan  
Gretchen, Jonathan, Raina & Jacob  
Hal Bishoff

Hannah Hoffmann  
Hattie Scott  
Jill Christopher  
John and Corrine Hawthorne  
Jon Nistler  
Kara and Cade Kostohryz  
Keegan Kostohryz  
Kennedy & Kade  
Lance Holden  
Lexi Nistler  
Linda Soderberg  
Linden Prom  
Matthew Watson  
Michelle and Jason Durso  
Nick and Shauna Wimer  
Paul Speral

River and Dakota Berg  
Ruby  
Ryan  
Sharon Heinze  
Spencer Mack  
Stefan Chizek  
Superior Ins Clients  
The Binfet Family  
The Neuharth Family  
The Rolfson Family  
The Schoepp Family  
Tiara Girls  
Torie Rusch  
Zayne



RMHC<sup>®</sup>  
of the Red River Valley

Schatz Family,  
98 nights



# THANK YOU

**RMHC OF THE RED RIVER VALLEY**

4757 Agassiz Crossing S,  
Fargo, ND 48104

Phone: 701-232-3980

Fax: 701-364-1954

Email: [rmh@rmhcfargo.org](mailto:rmh@rmhcfargo.org)

[www.rmhc.org](http://www.rmhc.org)