



Ronald McDonald  
House Charities®  
of the Red River Valley

# ANNUAL REPORT 2021



Hogan Family  
55 nights

# TABLE OF **CONTENTS**

---

## TABLE OF **CONTENTS**

Page 2

## OUR **MISSION**

Page 3

## RMHC **STAFF**

Page 4

## 2021 **YEAR IN REVIEW**

Page 5

## A MESSAGE FROM THE **EXECUTIVE DIRECTOR**

Page 6

## 2021 **BOARD OF DIRECTORS**

Page 9

## **FINANCIAL SUMMARY**

Page 10

## 2021 **MEMORIAL & TRIBUTE DONATIONS**

Page 11

## OUR **MISSION**

---

Keeping families together and providing the comforts of home while their kids receive medical care.





# About RONALD MCDONALD HOUSE CHARITIES OF THE RED RIVERY VALLEY

Our two core programs enable families to spend more time with their sick children, to interact with their doctors, and to be involved in important decisions about their child's care. Much of a family's ability to stay close to their child during illness is related to unexpected costs that families face and their means to cover these. Costs of hotel rooms, eating out, traveling from home, missed work, and medical bills are just a few challenges that families face.

The Ronald McDonald House provides housing for families with children 21 or younger who are receiving care at Sanford Health, Essentia Health, Eating Disorder and Weight Management Institute, Roger Maris Cancer Center or Prairie St. John's. So much more than a hotel, we also provide home-cooked meals, play areas, laundry facilities, computers, and a home-like atmosphere to families working to care for their critically ill children. We surround our families with love and support from giving volunteers, caring staff, and from other guest families who understand what families are going through. While families can donate \$20 per night toward the cost of their stay if able, there is no requirement for payment for families to utilize our programs. In fact, approximately 80% of our families pay nothing to stay at the Ronald McDonald House.

The Ronald McDonald Family Room serves as a respite for families with babies receiving medical care at Essentia Health Hospital in Fargo. Like the Ronald McDonald House, the Ronald McDonald Family Room at Essentia Health is designed to support families through their child's medical journey – whether it's a break from the clinical environment, a restorative nap or night's rest, or a sense of normalcy. We provide a relaxed space for families to grab a snack or a drink, take a shower, or take a quick break just steps from their critically-ill child, if only for a few moments.



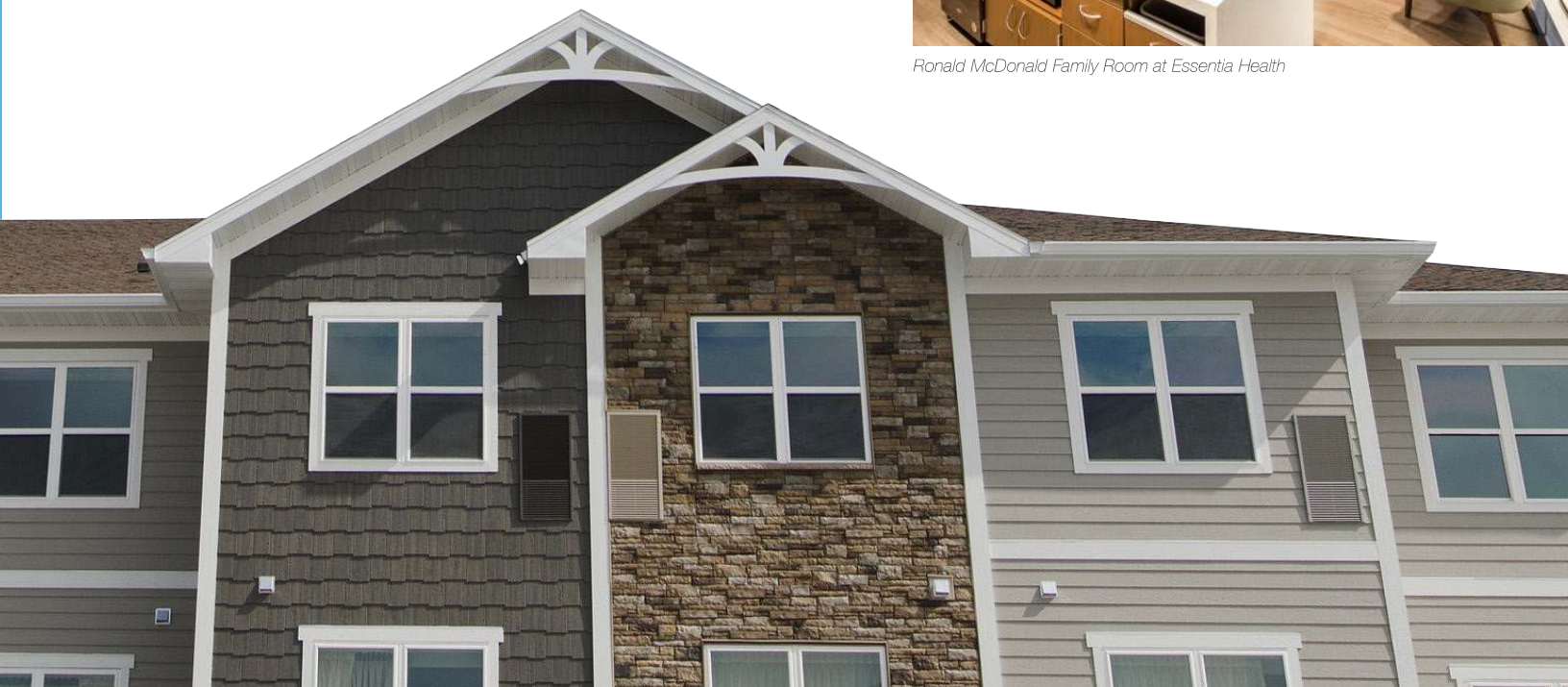
*Upstairs family room equipped with couches and a TV.*



*Open-concept dining room that connects to multiple kitchen areas.*



*Ronald McDonald Family Room at Essentia Health*







Burley Family  
83 nights

## RONALD MCDONALD HOUSE CHARITIES OF THE RED RIVER VALLEY 2021 STAFF

### Executive Director

Jill Christopher

### Director of Family Services

Lane Pereboom

### Development Director

Jakelle Hoffmann

### Director of Operations

Ashley Petersen

### Mission Support Specialist

Merideth Sherlin

### Mission Support Specialist

Haley Westby

## Family Service Associates

Tori Fiedler

April Kratcha

LeAnn Ebersviller

Madison Marschel

Hailee Peterson

Lisa Rudnick

McKenzie Breden

Stephanie Nelson

Emily Pekas

Devin O'Harra

Nora Murphy

Hannah Wilke

Ali Engraf

A special thanks to our interns and security team who committed their time and talents to RMHC in 2021.



# RMHC of the Red River Valley

## YEAR IN REVIEW

# 2021



Ronald McDonald House  
Average Stay

17.2 Days

191

volunteer  
prepared meals

2,024

volunteer hours

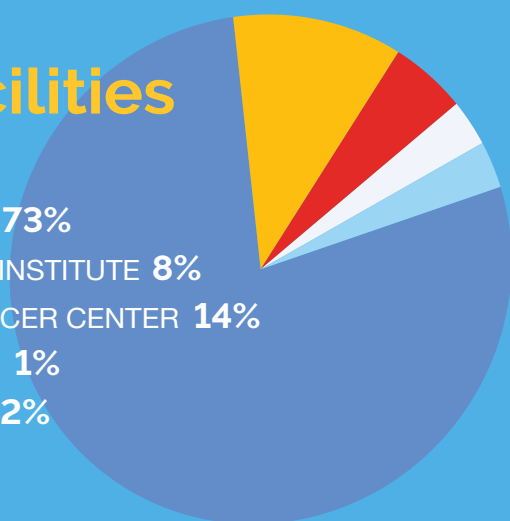
Ronald McDonald Family Room  
at Essentia Health

251 families



### RMH Facilities Served

SANFORD HEALTH 73%  
EATING DISORDER INSTITUTE 8%  
ROGER MARIS CANCER CENTER 14%  
PRAIRIE ST JOHN'S 1%  
ESSENTIA HEALTH 2%  
OTHER: 2%



Ronald McDonald House  
373 families

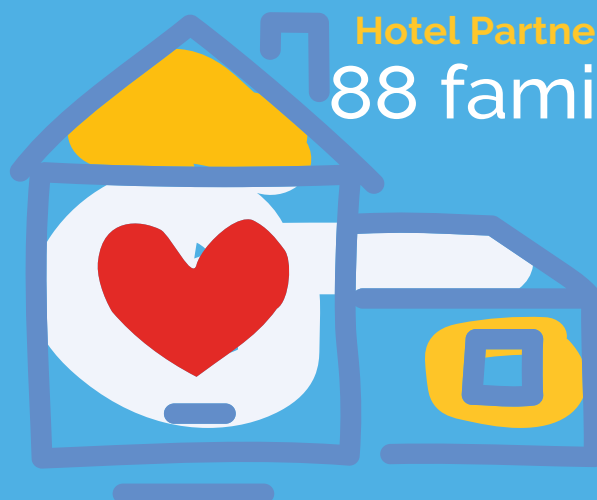
### RMH Top Diagnosis

NICU | HIGH RISK PREGNANCY  
EATING DISORDERS | CANCER

79%

OF FAMILIES PAID NOTHING TO STAY AT  
THE RONALD MCDONALD HOUSE.

Hotel Partnership  
88 families



IF FAMILIES WOULD LIKE, THEY CAN DONATE \$20 TOWARD THEIR  
STAY. NO ONE IS TURNED AWAY FOR INABILITY TO PAY



## A MESSAGE FROM THE EXECUTIVE DIRECTOR



A very rewarding part of my job is getting to see first-hand the generosity of our community in support of the mission of RMHC of the Red River Valley. 2021 was another wonderful year thanks to the endless support we received from you – our donors, volunteers, and advocates. I am proud to say that with your support we served an unprecedented 712 families in 2021, which is 94 more than 2020 – a 15% increase. Thanks to our steadfast supporters, we were able to continue our mission of keeping families together.

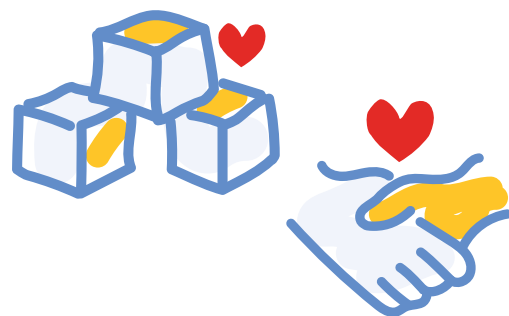
In addition to providing a place of respite at our Ronald McDonald House and Ronald McDonald Family Room, we continue to provide families with so much more. Warm meals, baked goods and snacks to feed to body, basic necessities like toothbrushes to ensure families have what they need, handmade quilts to provide warmth, and fun items like toys and art supplies to bring a smile to a child's face are just some of the highlights of our programs.

As we wrap up 2021 and look to a new year, we look forward to continuing to share our mission with you. Know that your generous gifts are already at work supporting the brave and resilient families we have with us today. You are making an incredible impact and I am so grateful for your continued support.

With a heart full of gratitude,

A handwritten signature in blue ink that reads "Jill R. Christopher".

**Jill R. Christopher**  
Executive Director





# LAWSON NELSON

---

**"We are over-the-top blown away by the generosity that was poured out to us by the Ronald McDonald House. Our needs were thoroughly tended to and then some."**

- Nelson Family

---



Nelson Family  
97 nights



# JONES SORUM

**"Without RMH, we might not have been able to see Jones daily with home being far away and not knowing what we could afford financially"**

- Sorum Family



Sorum Family  
6 nights





# 2021 BOARD OF DIRECTORS

## Officers

**President** – Jeremy Ostrowski, Aldevron

**Vice President** – Katie Rizzo, Sanford Health

**Past President** – Shauna Wimer, Midco

**Treasurer** – Alexis Odden, Eide Bailly

**Secretary** – Emily Cook, McDonald's

## Members

Todd Anderson, Josef's School of Hair, Skin and Body

Katie Bjornson, Fargo Center for Dermatology

Nicole Christensen, Essentia Health

Brad Kraft, Ascensus

Sharon Miller, Retired HR Professional

Shawn Paschke, Xcel Energy

Madison Quamme, Flint Group

Amanda Richter, Prairie St. John's

Caitlin Stoecker, Bobcat

Jean Zimmerman, Offutt Family Foundation



Hogan Family  
55 nights



**Ronald McDonald  
House Charities®**  
of the Red River Valley

# FINANCIAL SUMMARY

## AS OF DECEMBER 31<sup>ST</sup> 2021



### Current Assets:

Cash, cash equivalents, short-term investments	\$903,724
Property, equipment, less accumulated depreciation	\$4,094,385
Long-term investments/Other Assets	<u>\$2,437,776</u>
<b>Total Assets</b>	<b><u>\$7,435,885</u></b>

### Liabilities & Net Assets:

Current Liabilities	\$57,840
Long-Term Debt	\$335,141
<b>Total Liabilities</b>	<b><u>\$392,981</u></b>

### Net Assets:

Without donor restrictions	\$5,334,484
With donor restrictions	\$1,708,420
<b>Total net assets</b>	<b><u>\$7,042,904</u></b>

<b>Total liabilities &amp; net assets</b>	<b><u>\$7,435,885</u></b>
-------------------------------------------	---------------------------

### Income:

Contributions	\$660,608
Fundraising Events (net of expenses)	\$132,680
Grants	\$56,600
Non-Cash Contributions, net	\$26,952
Program Service Revenue	\$80,347
Investment Income	\$138,940
Loss on Disposal of Assets	\$(1,301)
<b>Total Income</b>	<b><u>\$1,094,826</u></b>

### Functional Expenses:

Program services (House operations & outreach)	\$677,160
Fundraising	\$139,750
Management & General	\$75,467
<b>Total Expenses</b>	<b><u>\$892,377</u></b>



*Gifts were made in memory & honor of the following people in 2021. If you made a memorial or honorarium gift in 2021 and it was omitted, misspelled, or listed incorrectly, please accept our sincere apology and notify our Development Director, Jakelle, at 701-232-3980 or [jakelle@rmhcfargo.org](mailto:jakelle@rmhcfargo.org).*

## 2021 MEMORIAL DONATIONS

DONATIONS WERE MADE IN MEMORY OF:

#DevonKind	Diane Anderson	Jerry and Charlotte	Ray Flint
Ace Brandt	Don Gates	Mickelson	Reid Connell
Alivia Lea Plutowski	Donald Beutler	Joan Thompson	Reuben and Ethelyn
Arlan Torgrimson	Donna Elliott	John Freer	Johnsrud
Ashten	Dr. Jon Kaspari	John Freise	Robert "Bob" Elliot
Barbara Craft	Duane Baumgartner	Kambry Ihry	Ron Olson
Bev Odden	Earl Surerus	Karen Reed	Rosalyn Brockman
Bill Nelson	Easton Johnson	Kathy Rognlie	Rosie McGinty
Bob Wimer	Elaine Holm	Keith Krepps	Rudy Stutsman
Bonnie Steeke	Elaine Snustad Kolle	Lillian Hilgers	Russel Schmidt
Brady Iverson	Faith Westby	Lloyd Schultz	Ryan Meade
Brett Campbell	Grace Hindes	Luna Gonzalez	Sara McAllister
Breyden	Heidi Flagstad	Mae Marie Blackmore	Sheri Kimber
Calen Schmidt	Helen Curtis	Marc Hanson	Shirley Baumgartner
Cameron Bolton	Hellat Mai	Margaret Woodward	Shirley Meyer
Carol Connell and Reuben Miller	Howard & Lavina Lemieux	Marian Nelson	Sophia Brademeyer
Charity Mae Kohlman	Jack Anderson	Marion Haugrud	Stephen Busch
Chase Besette	Jack Ellis Peña	Marjorie Thompson	Terry Anderson
Christopher Lubbers	Jack Peterson	Michael Muhsen	Terry Bladholm
Claire Exner	James Vetter	Phyllis Norgon	Tom Askland
Clarence Colgrove	Jatara Parks	Piper Paisley Johnson	Tuyet Nguyen
	Jerome Link	Randy Link	Violet 'Vi' McAllister

## 2021 TRIBUTE DONATIONS

DONATIONS WERE MADE IN HONOR OF:

37 People	Donna Podratz	Kade	RMHC staff
Afton and Zach Anderson	Eli D	Kaiser Schonert	RMHC volunteers
all the special babies	Elizabeth Rayman	Kathery Skarie	Ron Oldoren
Alpha Delta Kappa	Emily Cook	Kathryn Virginia Neuharth	Rose Klein
Angelah Bursiek	Emma Jorda	Krystle Duke, her beautiful	Rosie McGinty
Ashley Barry	Erica Johnsrud	children & Momma Tina	Ryan Wasvick
Aubrey Luggar	Esther Kuper	Langley Bradley	Sandra Nielsen
Bethann Cray	Goodland Coven and Friends	Laura Edwards	Sarah Peterson Muir
Brandon and Amanda	and their newest nephew,	Logan Wolden	Sharon Miller
Bergin Family	Watson	Lyle Kirchner	Shauna Wimer
Brayden and Joslyn Larson	Greg Dobitz	Mabel Schneider	Sutton Goodman
Brayden Rolfson	Haley Westby	Melvin McGriff	The Worthy Grand Matron
CeCe Olson and family	Hayden Meier	Mila Waletich	and the Worthy Grand
Charlie Potter	Hayley Beth	Mr. and Mrs. Terry Tobin	Patron of the order of the
Chelsey and Chad Ellis	Henrik Imler	Mrs. Ione Tobin	Eastern Star of North Dakota
Cheri Lynn Miller	Jack Buchmann	Muriel and Jack Hinman	Warren Lee
Chloe Anderson	Jackson and Finley Fulton	Norah Skaug	Wyatt, Dani, Hope and Faith
Claire Bohan	Jakelle Hoffmann	Patrick Fellman	Stramer
Colt Kaste	Janet Well	Paul Bell	
Colten	Jared Trangsrud	Paxton, Ryker, and Hadley	
Darren Dunlop	Jayda Rude	Petersen	
Dave and Rosalie Harmon	Jill Christopher	Rhen and River Skytland	
Debrah Novak	Josey Skytland's twins	Ringo Nielsen's therapy work	
Derek and Marci Hjelm Family	Joy Eastgate	Rizzo kids	



**Ronald McDonald  
House Charities<sup>®</sup>**  
of the Red River Valley



**Ronald McDonald  
House Charities®**  
of the Red River Valley

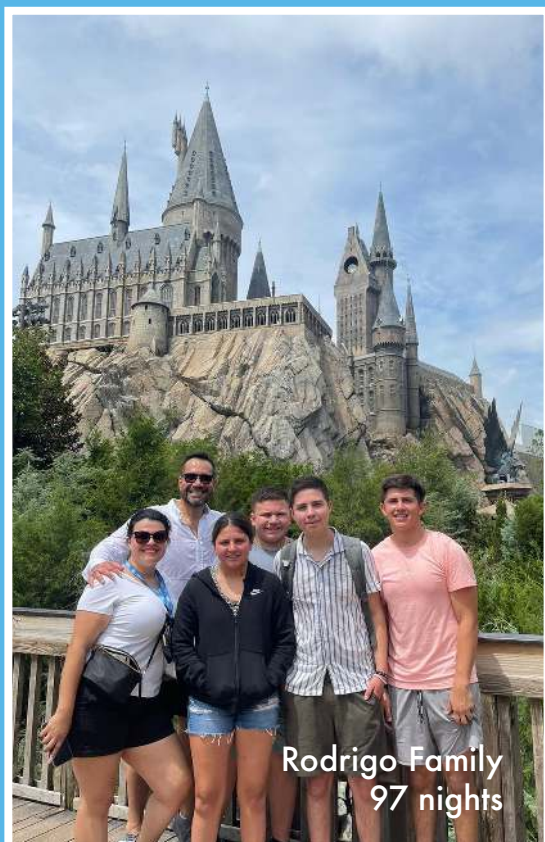
4757 Agassiz Crossing S  
Fargo, ND 58104

Phone: 701-232-3980  
Fax: 701-364-1954  
Email: rmh@rmhcfargo.org



Alexis Hoffart

# THANK YOU



Rodrigo Family  
97 nights



Hoffart Family  
45 nights



Alexis Hoffart



Tony Rodrigo  
97 nights



Hogan Family  
55 nights